

MUNICH GOES SMART



City of Munich



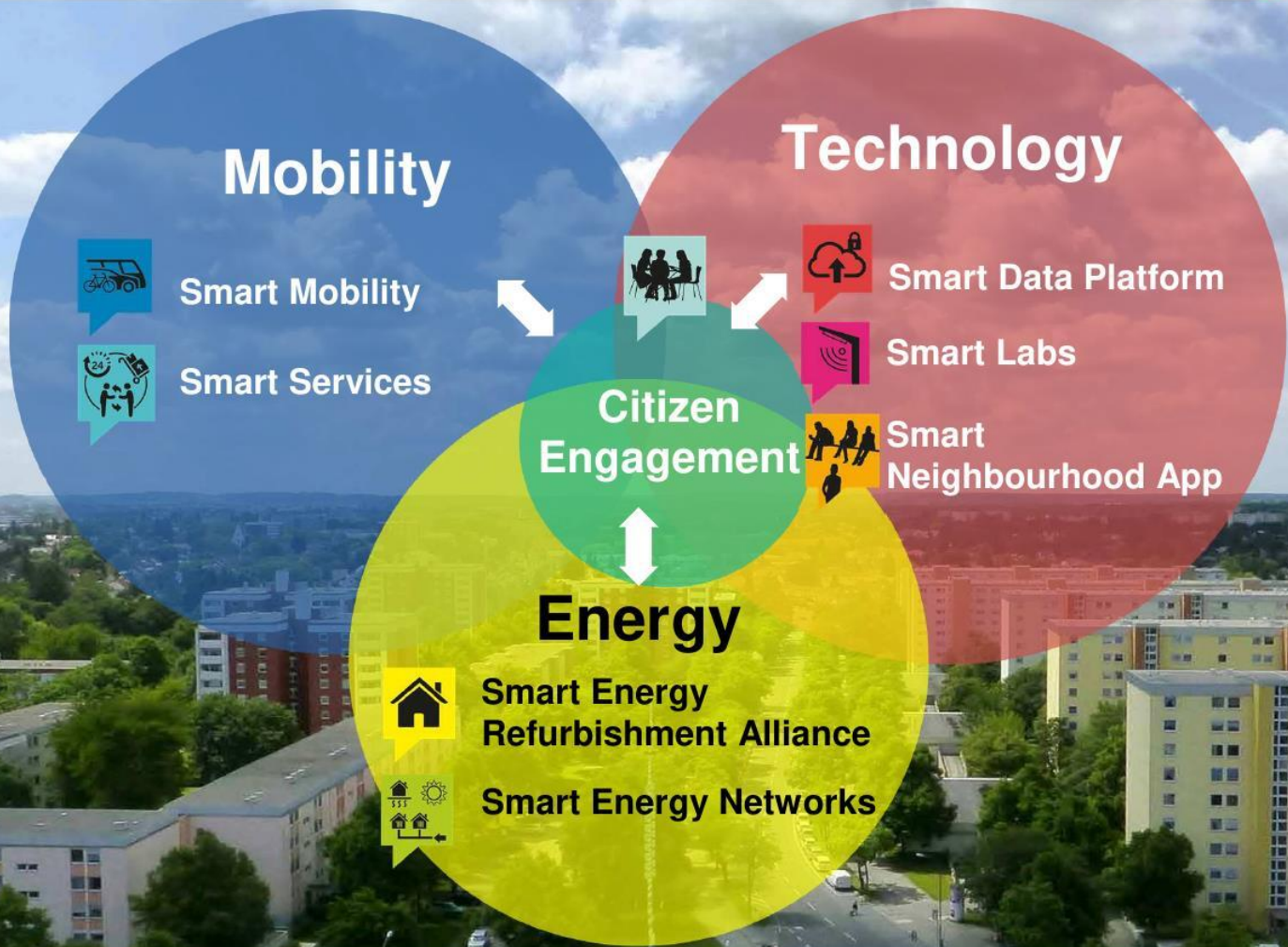
Wissens- und
Innovations-
gemeinschaft
Urbane Mobilität



VVD-M -
Digitalisierung
kommunaler
Verkehrssysteme

EasyRide -
Automatisiertes
Fahren im
städtischen Kontext

Projekt
Digitaler Zwilling
München



The Neuaubing-Westkreuz / Freiham project area

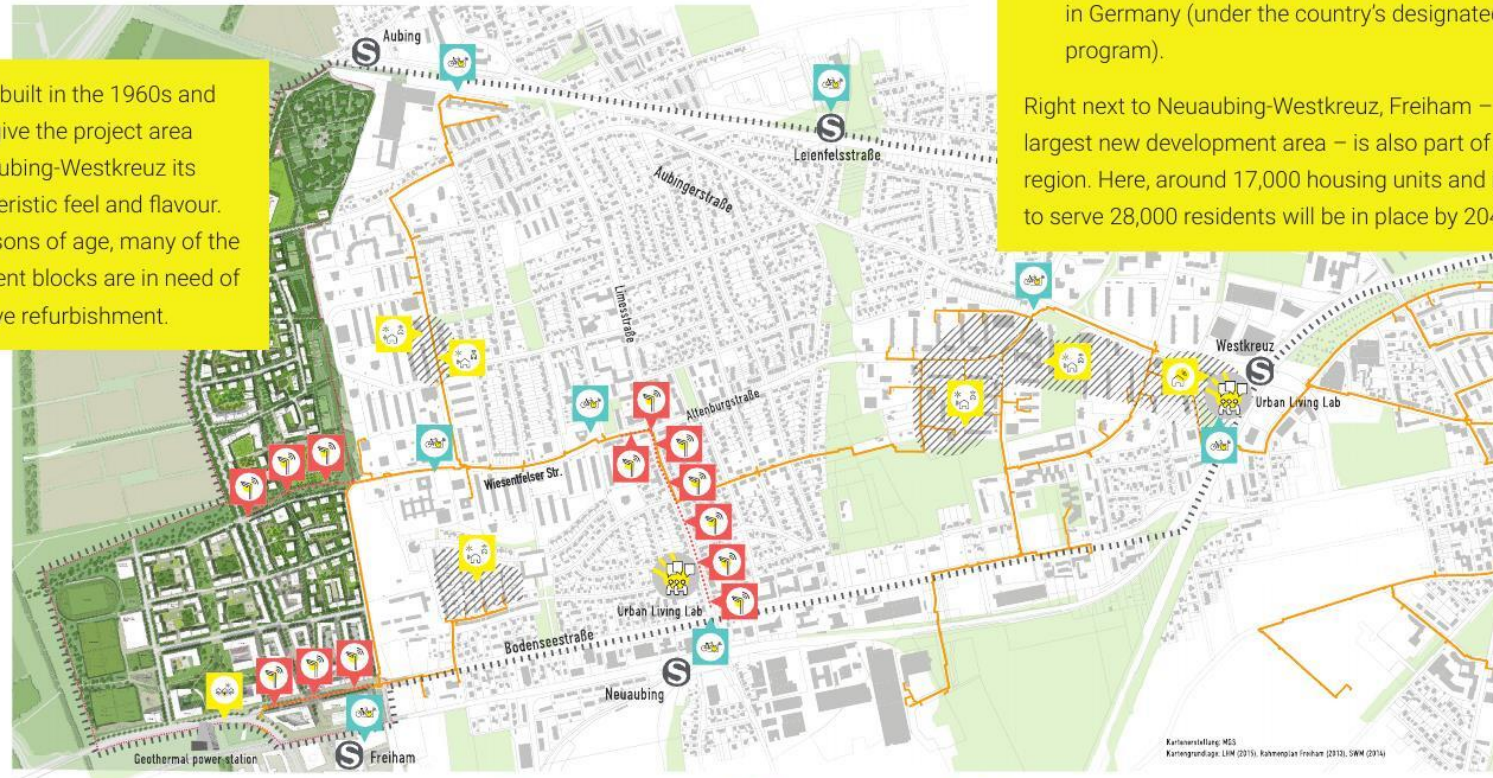
A lab for the future of Europe's cities

Homes built in the 1960s and 1970s give the project area in Neuaubing-Westkreuz its characteristic feel and flavour. For reasons of age, many of the apartment blocks are in need of extensive refurbishment.

The area features a heterogeneous array of buildings and is home to about 23,000 residents.

- It is part of what is geographically the largest but also the most thinly populated urban district of Munich.
- At the same time, it is the largest redevelopment area in Germany (under the country's designated "social city" program).

Right next to Neuaubing-Westkreuz, Freiham – Germany's largest new development area – is also part of the model region. Here, around 17,000 housing units and infrastructure to serve 28,000 residents will be in place by 2041.



URBAN LIVING LAB

MOBILITY

- Smart Mobility
- Smart Services

TECHNOLOGY

- Smart Data Plattform
- Smart Lamp Posts
- SmartCity App

ENERGY

- Smart Energy Refurbishment
- Smart Energy Grid